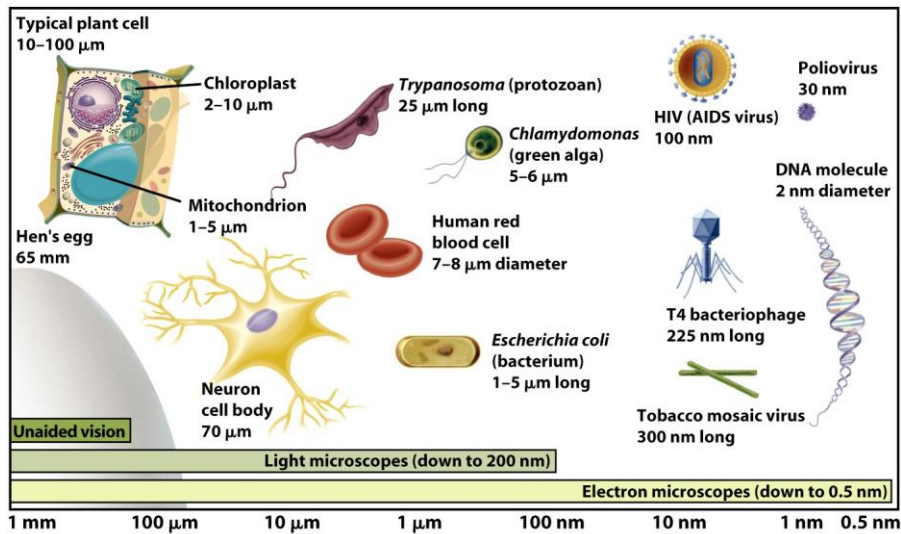


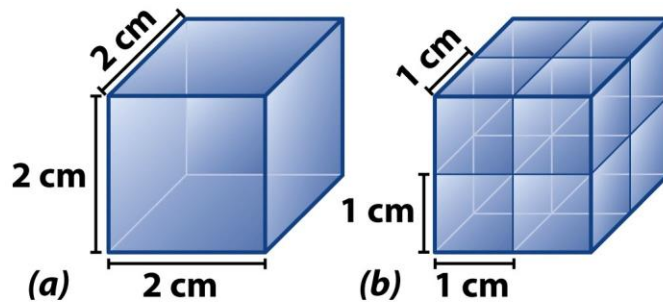
Cell Size



Cell Size

- cells range in size from 65 mm to 30 nm
- cells are measured in millimeters, micrometers, and nanometers.
- the ostrich egg is the largest cell on earth

Cells Have Large Surface Area-to-Volume Ratio



Number of cells	1	8
Total surface area	24 cm ²	48 cm ²
Total volume	8 cm ³	8 cm ³
Surface area/volume	24/8 = 3:1	48/8 = 6:1

Cell Size

- cells have large surface area-to-volume ratio
- surface area = total area of the surface of a 3D object
- Volume = amount of space an object takes up

Cell Size

- cells are small but efficient
- they are large enough to let things in/ out
- they are small enough to allow processes to take place without using up all of its energy

Characteristics of All Cells

- A surrounding membrane
- Cytoplasm – cell contents in thick fluid
- Organelles – structures for cell function
- Control center with DNA

